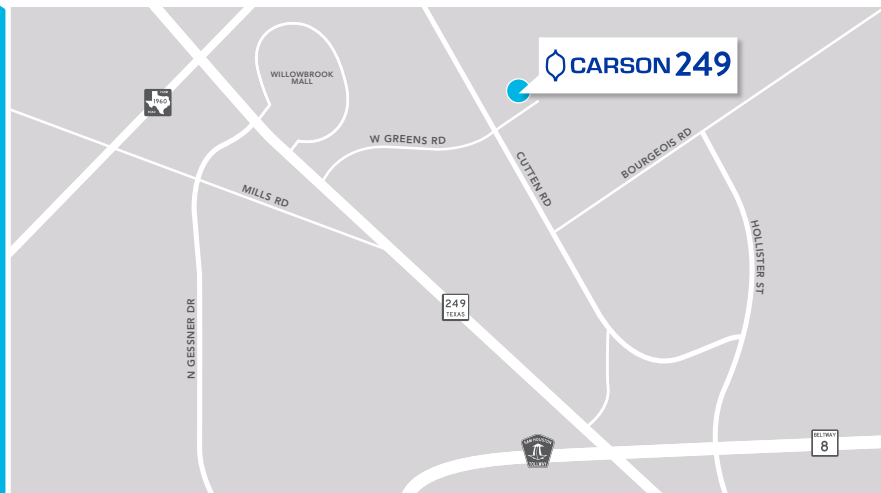




### PROJECT FEATURES

- > ±194,602 SF available
- > Divisible to ±50,000 SF
- > Front-load configuration
- > 4,674 SF first floor office
- > 2,621 SF second floor office
- > 198' truck courts
- > Fully fenced truck court
- > 64 trailer parking spots
- > 182 parking spaces
- > 39 dock-high doors with vision panels
- > 2 drive-in ramps
- > ESFR sprinkler system
- > 32' clear height
- > 52' x 45' typical column spacing
- > 240' building depth
- > Floodplain: Unshaded Zone - X

12202 CUTTEN RD • HOUSTON, TX 77066



For leasing information, please contact **STREAM**:

**JUSTIN ROBINSON**  
jrobinson@streamrealty.com  
713.300.0304

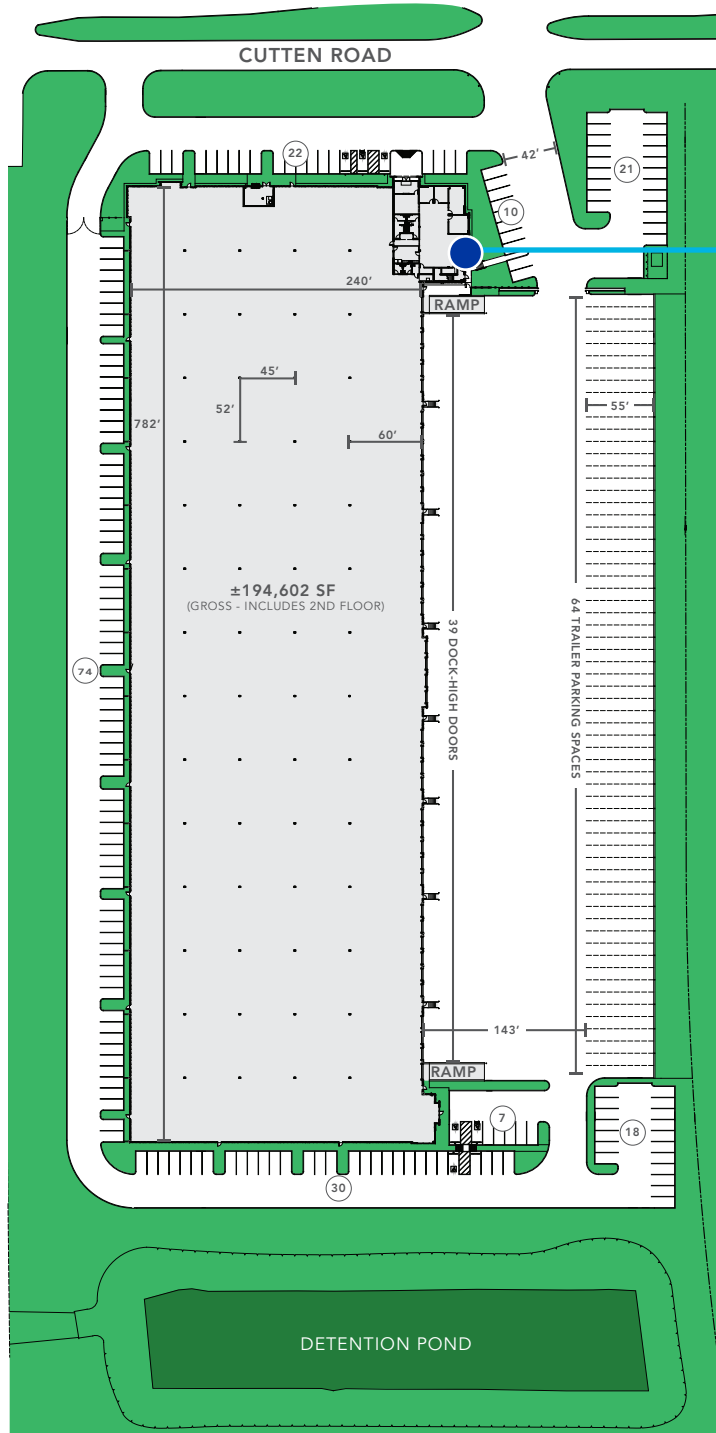
**JEREMY LUMBRERAS**  
jlumbreras@streamrealty.com  
713.300.0322

Owned & Managed by:

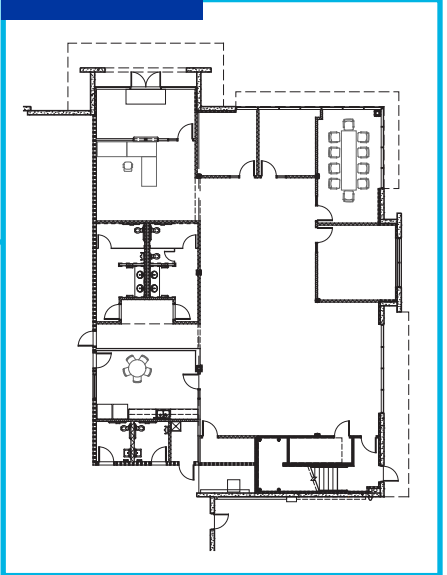


Leased by:

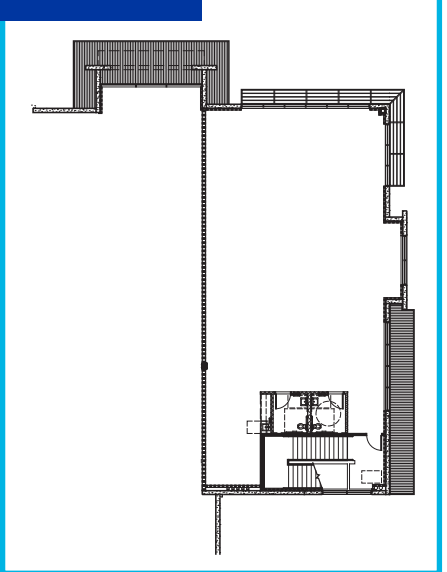




### FIRST FLOOR



### SECOND FLOOR



Owned & Managed by:

Leased by:

