

FOR LEASE +40,295 SQUARE FEET



18050 Central Avenue, Carson, CA 90746

PROPERTY FEATURES

- 9,533 square feet of two-story office space
- Additional 15,971 square feet of temperature controlled ground floor office/assembly space
- Entire warehouse is temperature controlled
- 8 Dock high loading positions (two with pit-style load levelers)
1 Ground level loading positions
- 32' Minimum clear height
- ESFR sprinkler system with K-14 heads
- T-5 warehouse lighting
- High image corner location
- Huge 135' fenced concrete yard area
- 2,500 Amps of electrical power
- Foreign Trade Zone benefits
- Convenient Access to five Freeways (I-405, I-110, I-710, 105 and 91)
- Minutes to the World Ports of Los Angeles & Long Beach

Owned & Managed By:



For further information:

John Schumacher
Executive Vice President
Lic. 00987225
T +1.310.363.4960
john.schumacher@cbre.com

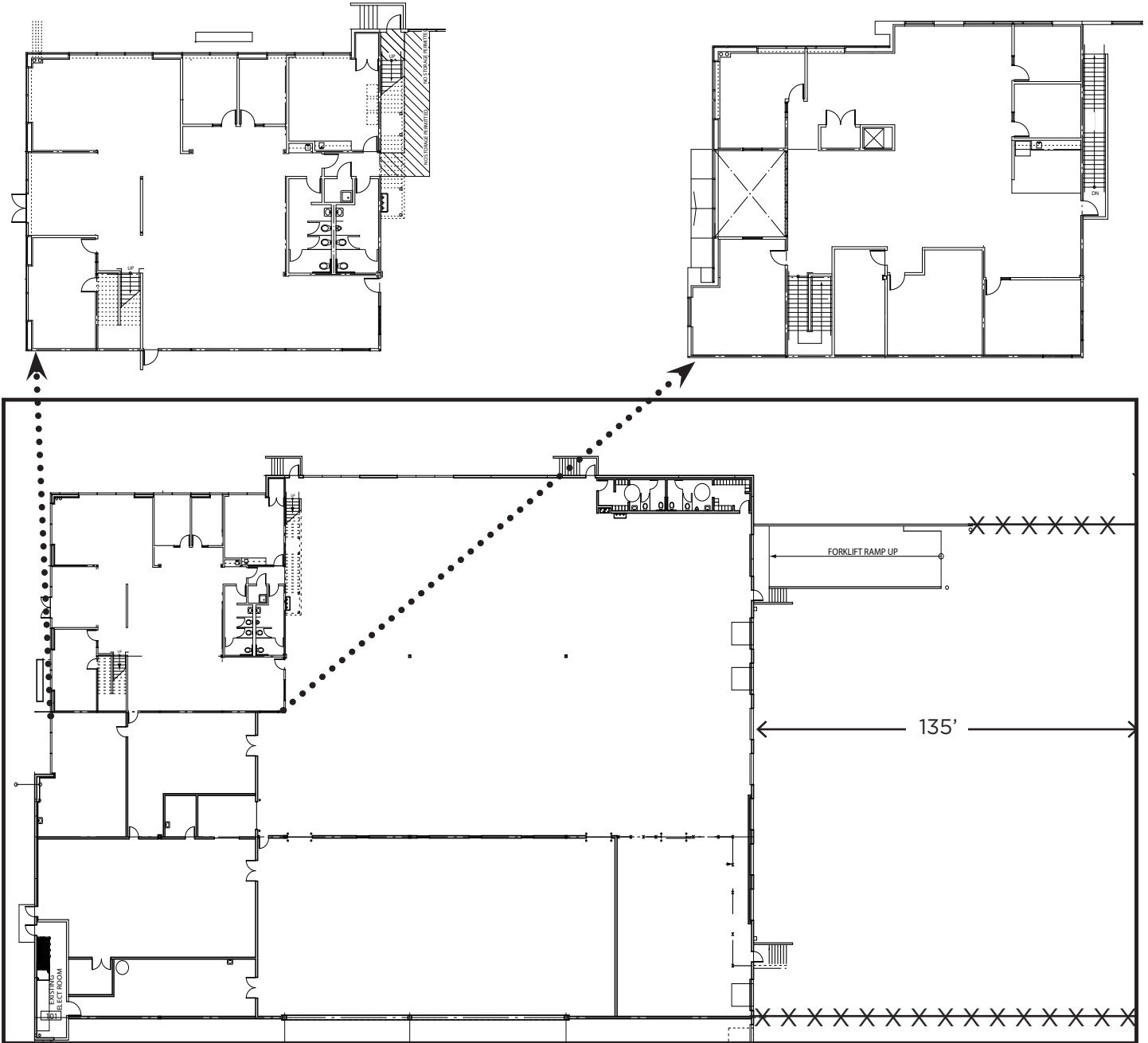
Bret Quinlan
Executive Vice President
Lic. 0144338
T +1.310.363.462
bret.quinlan@cbre.com

CBRE
2221 Rosecrans Avenue
Suite 100
El Segundo, CA 90245

18050 CENTRAL AVE, CARSON, CA +40,295 SQUARE FEET FOR LEASE

Ground Floor Office Space- +4,995 SF

Second Floor Office Space- +4,538 SF



Owned & Managed By:



For further information:

John Schumacher
Executive Vice President
Lic. 00987225
T +1.310.363.4960
john.schumacher@cbre.com

Bret Quinlan
Executive Vice President
Lic. 0144338
T +1.310.363.462
bret.quinlan@cbre.com

CBRE
2221 Rosecrans Avenue
Suite 100
El Segundo, CA 90245